



RG 80-31 4P

1750 [rpm]

1 Stadio

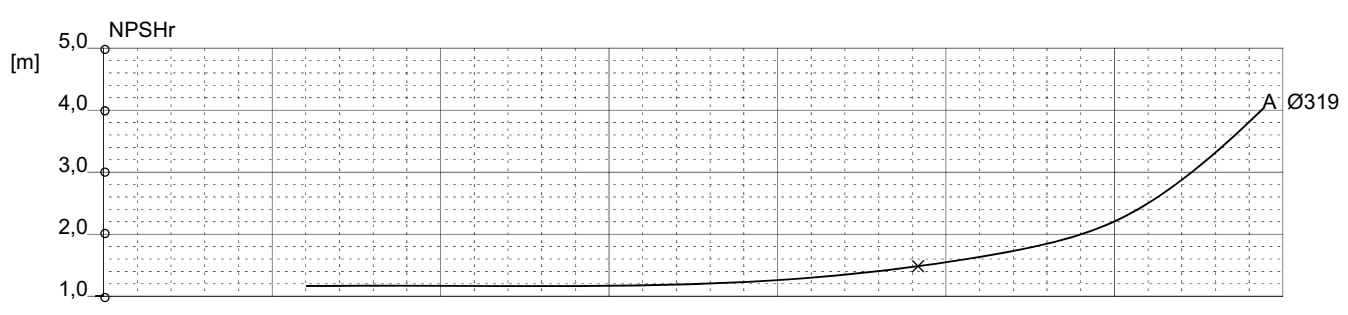
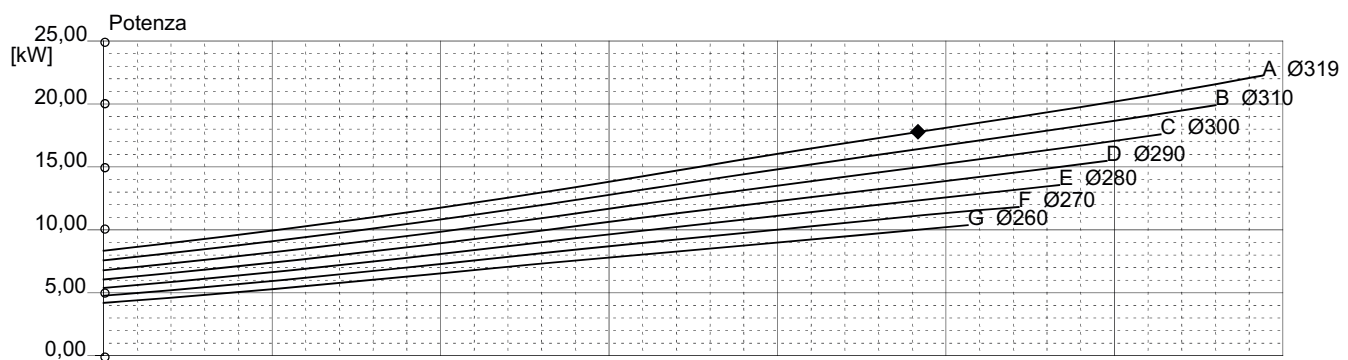
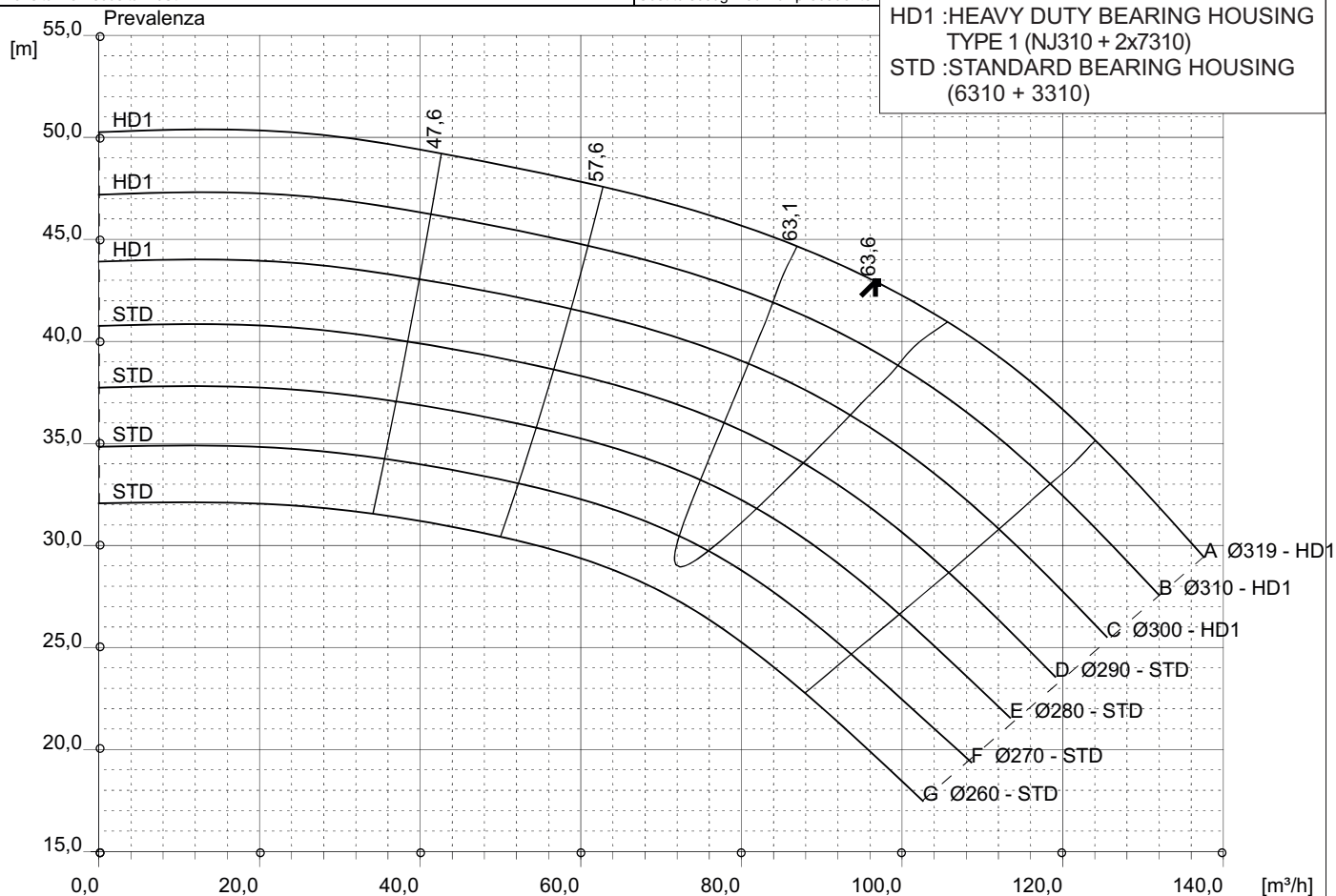
N. curva

T-0930

Diametro max 319 [mm]	Diametro min 260 [mm]	Velocità max 1999 [rpm]	Ø aspirazione 125 [mm]	Ø mandata 80 [mm]
---------------------------------	---------------------------------	-----------------------------------	----------------------------------	-----------------------------

Densità 1 e viscosità 1 cSt Sostituisce ogni edizione precedente

HD1 : HEAVY DUTY BEARING HOUSING
TYPE 1 (NJ310 + 2x7310)
STD : STANDARD BEARING HOUSING
(6310 + 3310)



Commenti						
Diffusore	Modello	NS 17	SSS 213	Autore	Data 12-gen-2011	Revisione