



# RG 100-25 6P

1150 [rpm]

1 Stage

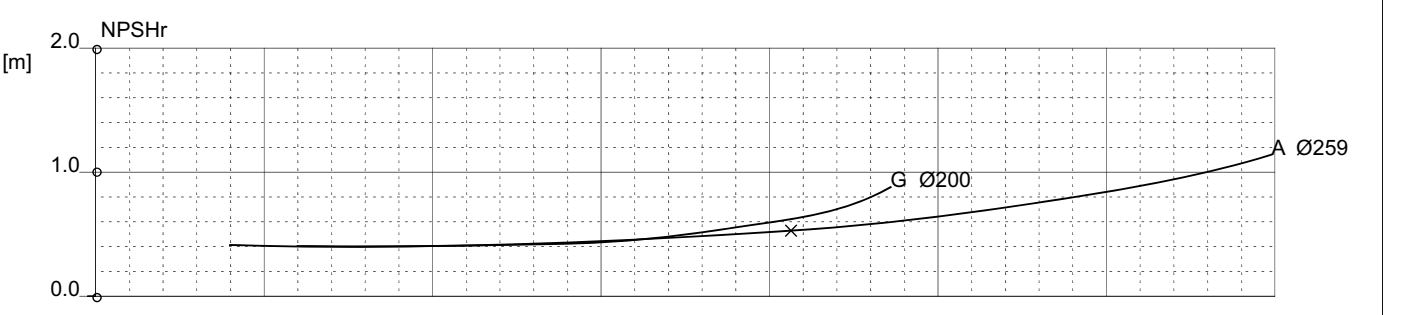
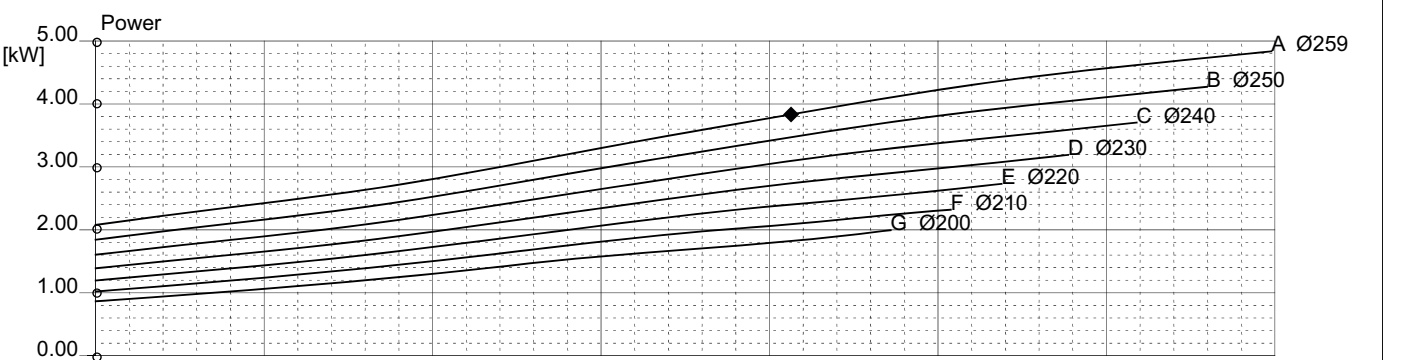
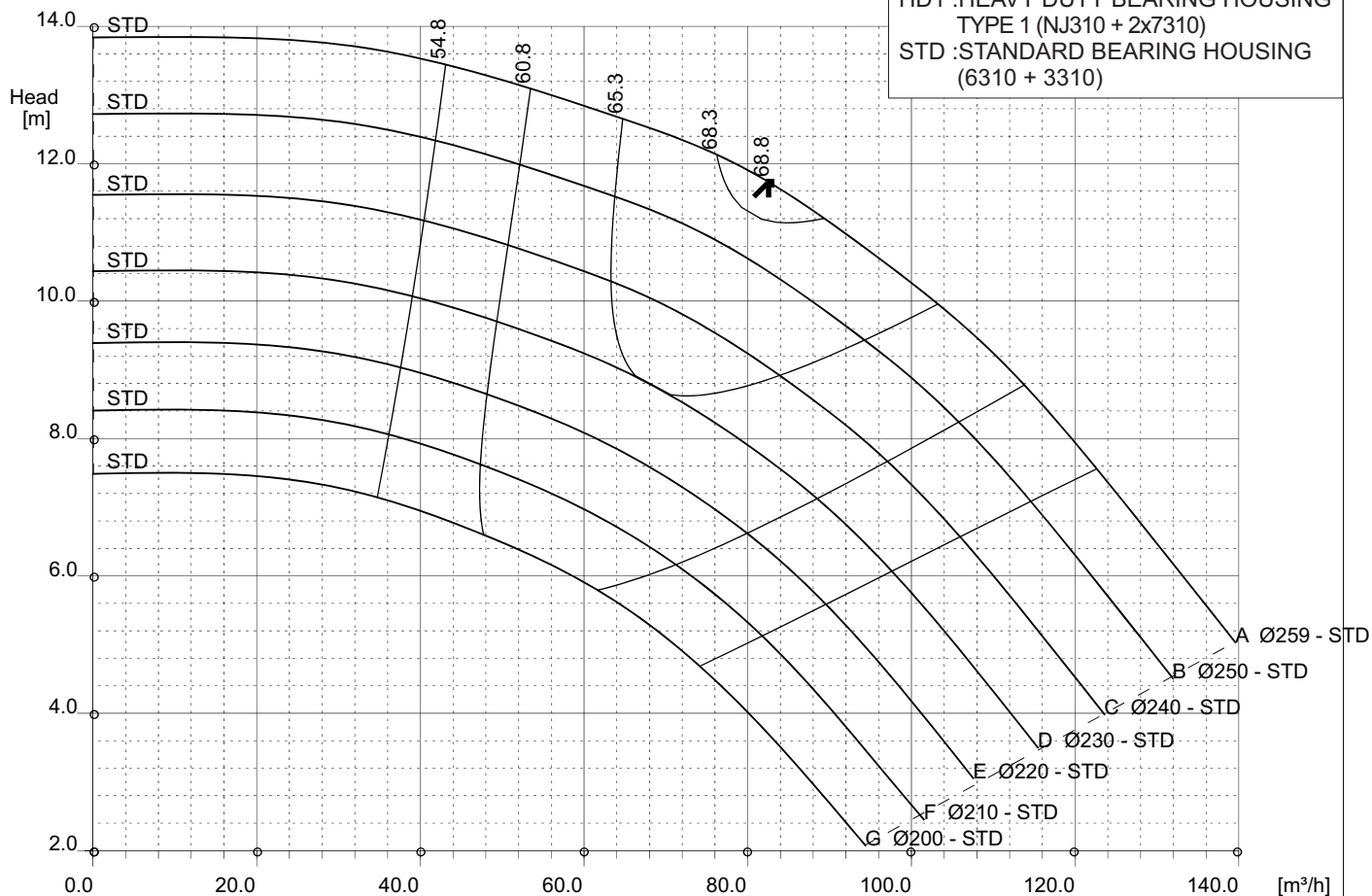
Curve N.

T-0920

Max. diameter <b>259 [mm]</b>	Min. diameter <b>200 [mm]</b>	Maxspeed <b>1999 [rpm]</b>	Suction Ø <b>125 [mm]</b>	Discharge Ø <b>100 [mm]</b>
----------------------------------	----------------------------------	-------------------------------	------------------------------	--------------------------------

Density 1 and viscosity 1 cSt Replace any previous edition

HD1 : HEAVY DUTY BEARING HOUSING  
TYPE 1 (NJ310 + 2x7310)  
STD : STANDARD BEARING HOUSING  
(6310 + 3310)



Comments						
Diffuser	Impeller	NS <b>27</b>	SSS <b>281</b>	Author	Date <b>Jan12,2011</b>	Revision