



RC 150-35 6P

1150 [rpm]
1 Stage

Curve N.

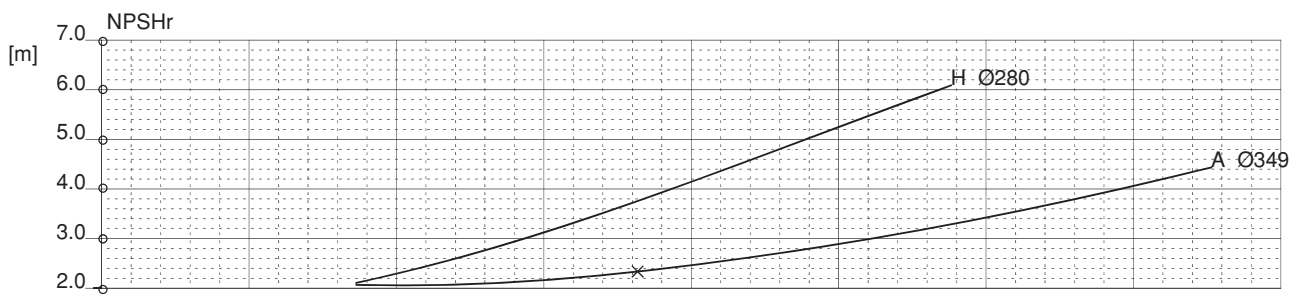
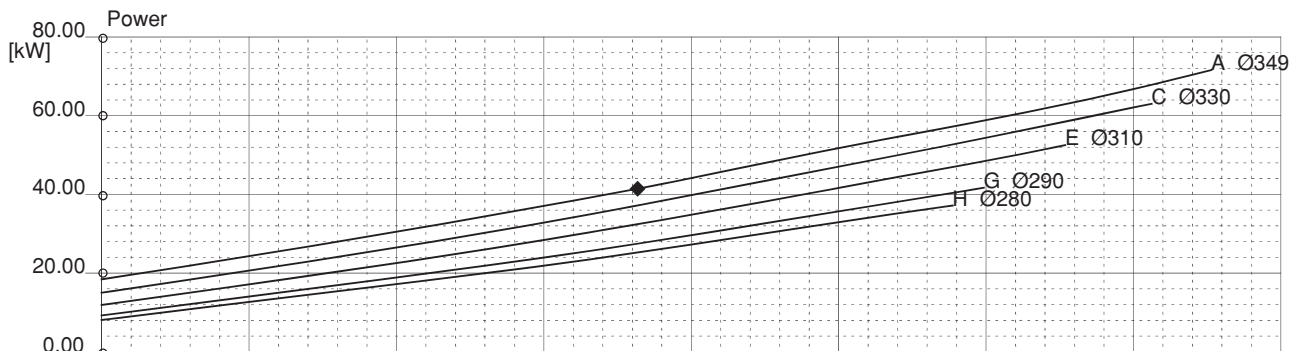
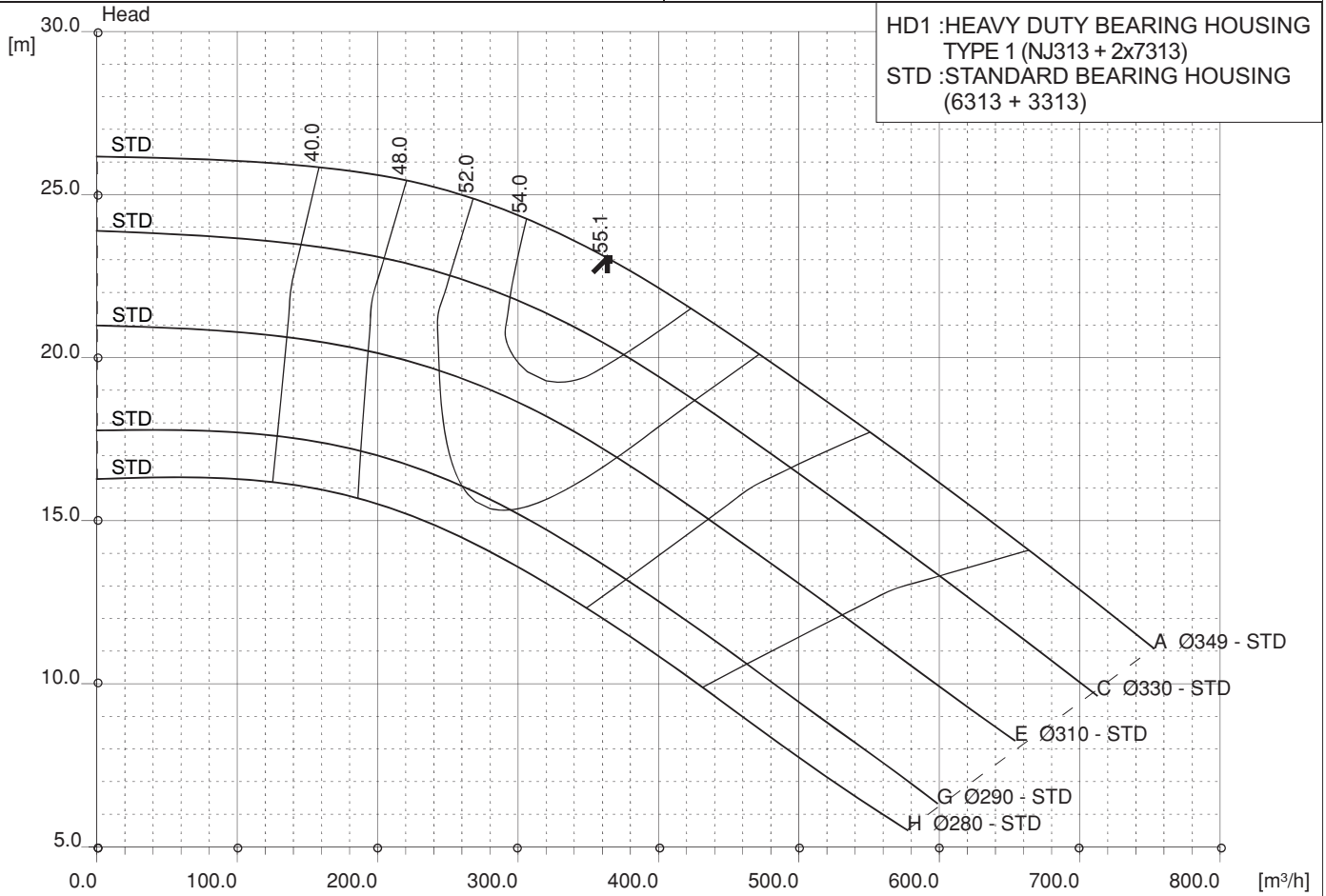
T-2097

Max. diameter 349 [mm]	Min. diameter 280 [mm]	Maxspeed 1199 [rpm]	Suction Ø 200 [mm]	Discharge Ø 150 [mm]
----------------------------------	----------------------------------	-------------------------------	------------------------------	--------------------------------

Density 1 and viscosity 1 cSt

Replace any previous edition

HD1 : HEAVY DUTY BEARING HOUSING
TYPE 1 (NJ313 + 2x7313)
STD : STANDARD BEARING HOUSING
(6313 + 3313)



Comments						
Diffuser	Impeller	NS 35	SSS 193	Author	Date Jan21,2011	Revision