



RC 100-25 6P

1150 [rpm]

1 Stage

Curve N.

T-1893

Max. diameter
259 [mm]

Min. diameter
200 [mm]

Maxspeed
1199 [rpm]

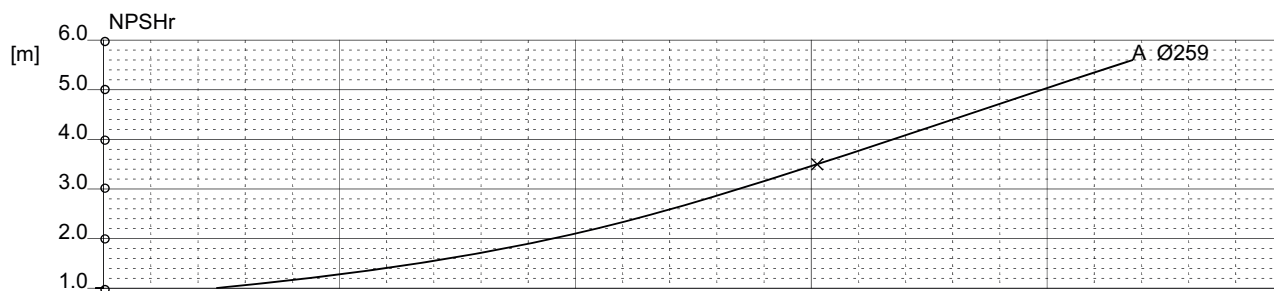
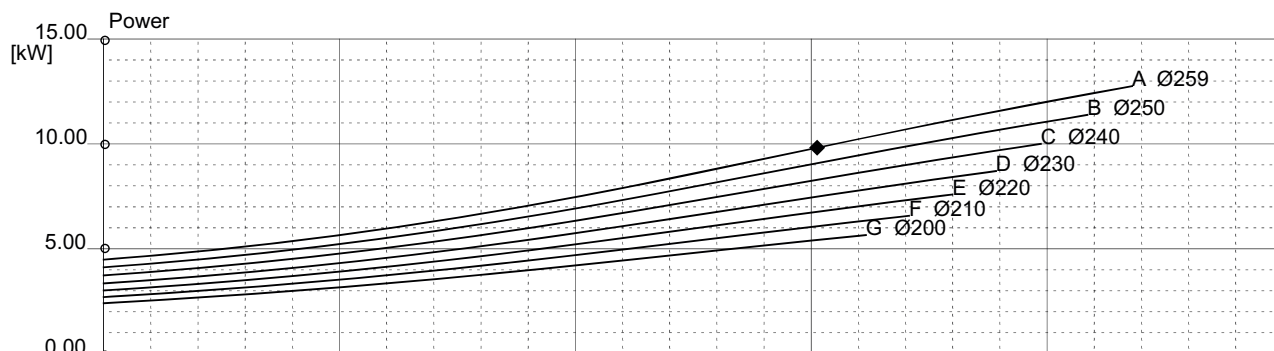
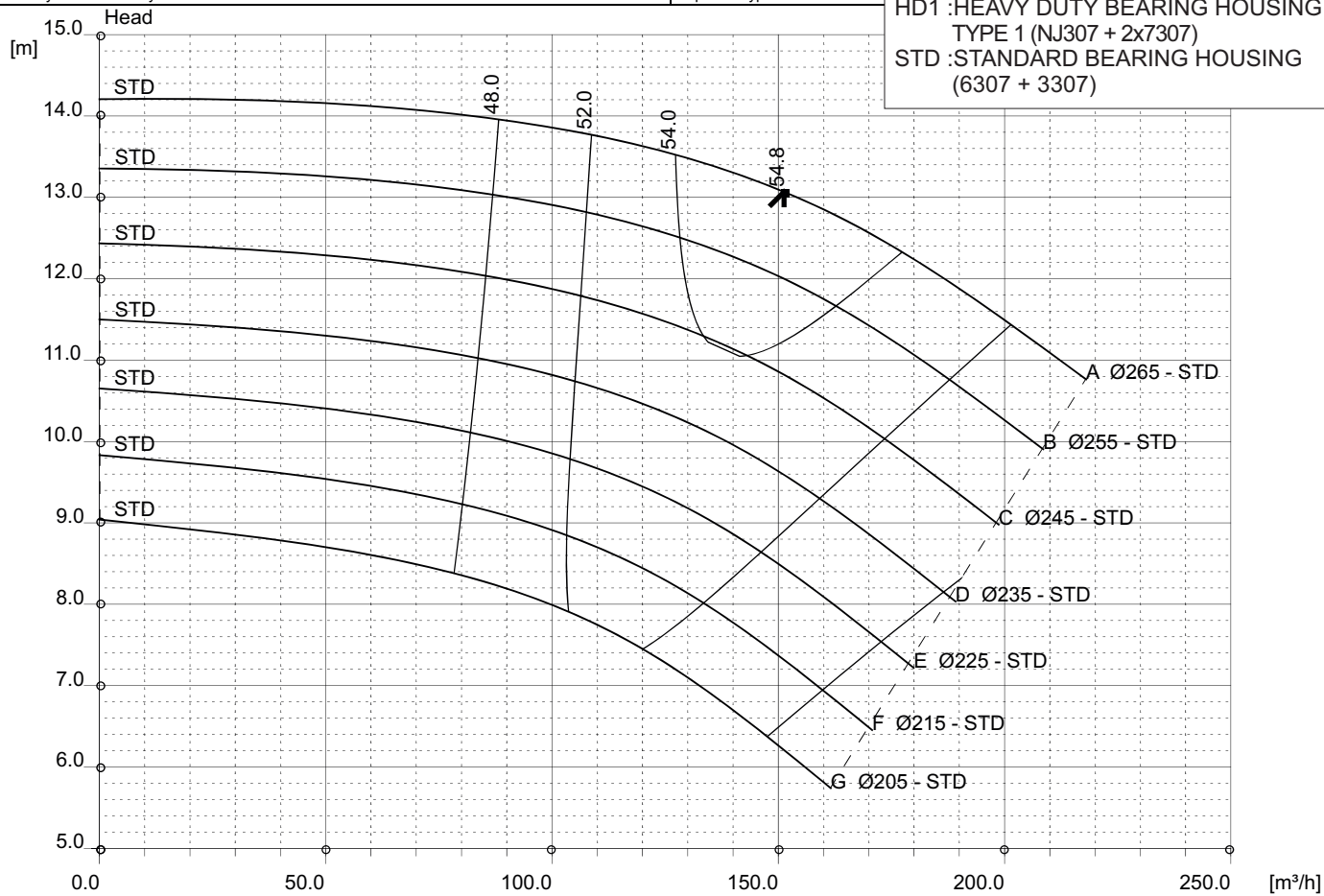
Suction Ø
125 [mm]

Discharge Ø
100 [mm]

Density 1 and viscosity 1 cSt

Replace any previous edition

HD1 : HEAVY DUTY BEARING HOUSING
TYPE 1 (NJ307 + 2x7307)
STD : STANDARD BEARING HOUSING
(6307 + 3307)



Comments

Diffuser	Impeller	NS 34	SSS 92	Author	Date Mar14,2011	Revision
----------	----------	-----------------	------------------	--------	---------------------------	----------