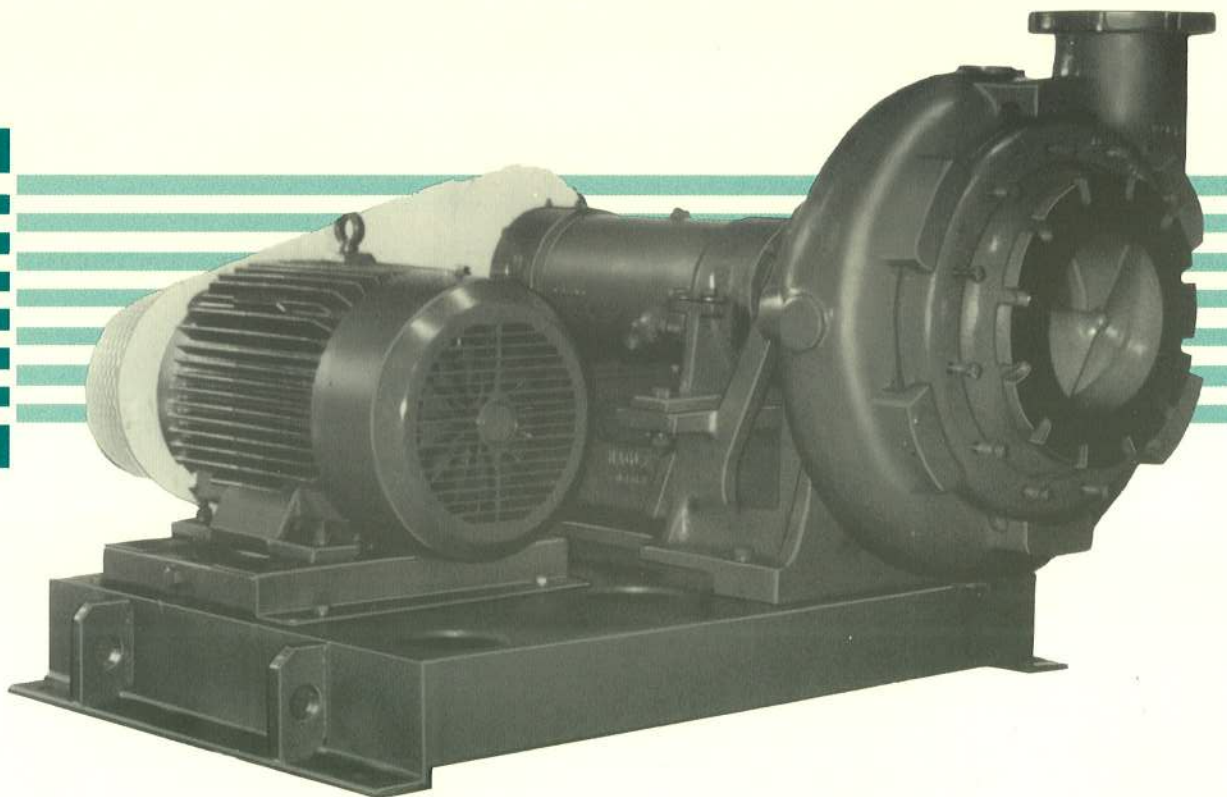


Nagle KCR Horizontal Pumps



MADE IN U.S.A.

KCR Horizontal Pumps feature heavy duty enclosed cartridge bearing design and large impeller passages for maximum solids handling with reduced wear



endurance engineered for maximum service

High performance for slurries with up to 70% solids

Capable of handling slurries with up to 70% solids, the Nagle KCR Horizontal Pump can tolerate a wide range of abrasive and corrosive applications. This pump incorporates many design features developed over more than 50 years of field experience.

Endurance engineered design features

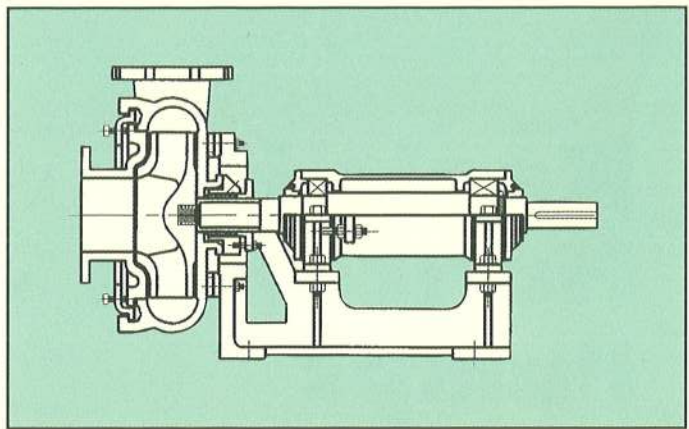
- Large clearance impeller designs with 3 or 4 blades optimized for maximum wear resistance.
- Long entry radius into impeller minimizes turbulence to extend impeller life.
- Wider sealing areas eliminate need for wear rings.
- Progressive casing wall thickness for maximum service life.
- Adjustable impeller maintains design conditions.
- All components piloted to insure concentricity during maintenance, impeller adjustment and assembly.
- Minimal shaft deflection through box due to increased shaft and bearing sizes.
- Cartridge design allows for easy replacement of rotating assembly.
- Large multi-labyrinth flingers on both ends of cartridge to minimize bearing contamination.
- Sizes 1" through 16", capacities to 12,000 USGPM.

Options

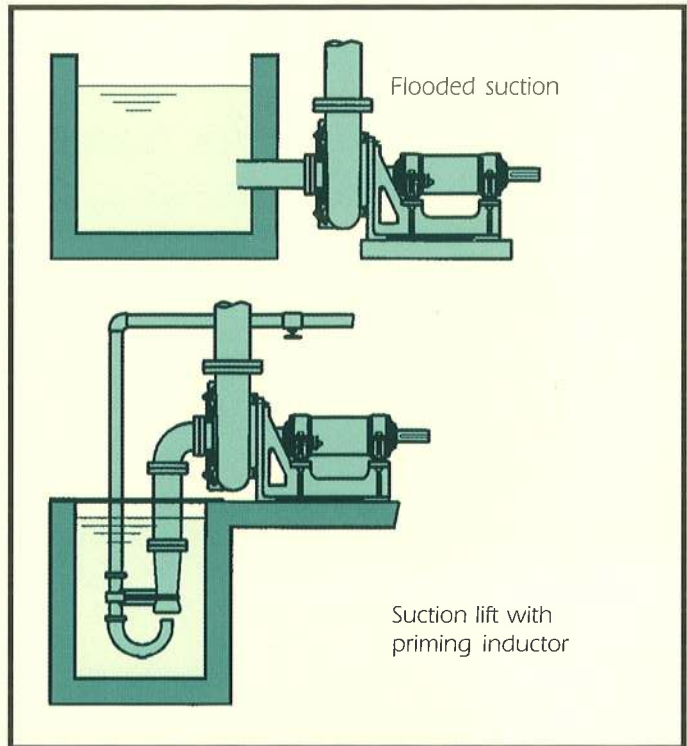
- Dry packing in box (no seal water).
- Mechanical seals.
- Dynamic seal available on selected sizes.
- Suction inducers on selected sizes.
- Priming inductor for positive priming with heavy solids.

For additional information on our complete line of finest quality industrial pumps, contact the Nagle representative in your area, or call us direct.

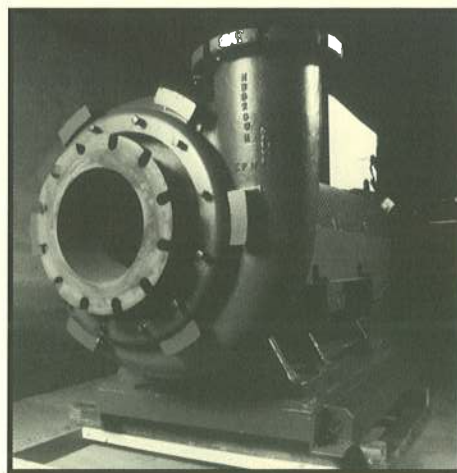
Specifications subject to change without notice.



Nagle heavy duty enclosed cartridge design



Mounting options



Clamp ring design allows removal of suction cover by loosening set bolts only



MADE IN U.S.A.

Nagle Pumps, Inc.

1249 Center Avenue
Chicago Heights, IL 60411
Telephone: 708-754-2940
FAX: 708-754-2944